

SMS Manager 1.0

User Manual

Copyright © 2000 by Gert-Jaap Glasbergen, Berend Engelbrecht. All rights reserved.

SMS Manager is a Software Cave product
<http://www.softwarecave.com>
info@softwarecave.com

Table of Contents

1	About SMS Manager 1.0	3
2	Configuring SMS Manager.....	3
3	Sending an SMS message.....	4
4	Viewing received messages	4
5	Replying to messages	4
6	Forwarding messages	5
7	Deleting messages	5
8	Troubleshooting	6
8.1	Setup issues	6
8.2	Connection problems	6
8.3	Phone memory.....	6
8.4	Read/unread state	7

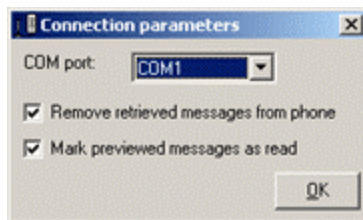
1 About SMS Manager 1.0

Welcome to SMS Manager! With this application you can manage your SMS collection right from your desktop or portable PC, thereby bypassing the difficult management of SMS messages on most phones today.



With SMS Manager you can read, save, send, reply and forward SMS messages just as easy as you manage your e-mail. The familiar user interface provides you with better overview and the application can store much more messages than any phone could ever do.

2 Configuring SMS Manager



Select 'Connection Parameters' from the File menu to configure SMS Manager. You can set the following parameters:

COM port

Select the serial communications port where you connect the phone from the drop-down list. Most computers have two ports that are known as COM1 and COM2.

Remove retrieved messages from phone

Check this box to automatically remove SMS messages from the phone when they are stored in the SMS Manager database. Removing messages from the phone frees up SIM memory so that new messages can be received. You may also use the 'Remove All from Phone' option in the Edit menu to perform this task manually.

Mark previewed messages as read

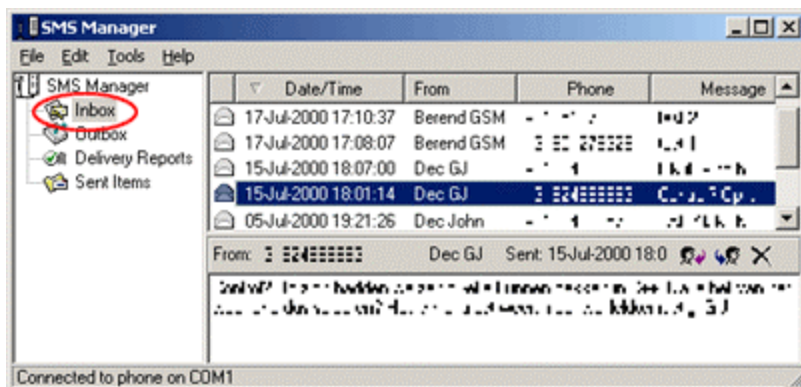
Check this box to mark SMS messages as read when you have viewed them in SMS Manager. If you leave this box unchecked, messages are only marked as read when you have read them on the display of the phone.

3 Sending an SMS message



Select 'New SMS Message' from the File menu to send an SMS message. You can either type the phone number for the recipient in the 'To:' box or select an entry from your phone's phonebook. Click on the down arrow button to view a list of phonebook entries.

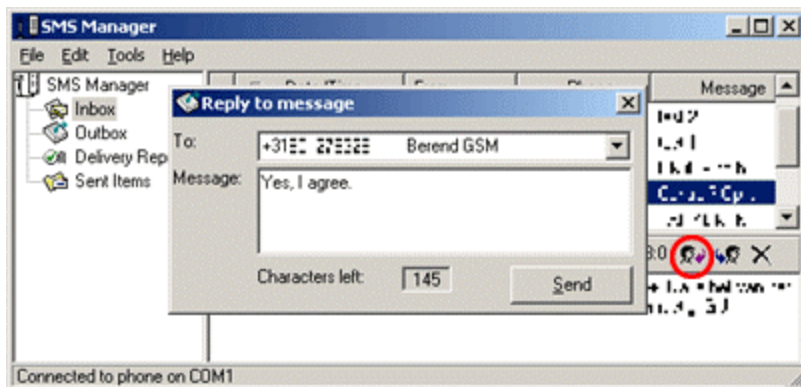
4 Viewing received messages



Click the Inbox icon in the tree menu to view a list of received messages. Select one of the messages from the list to view its full text in the pane below the list.

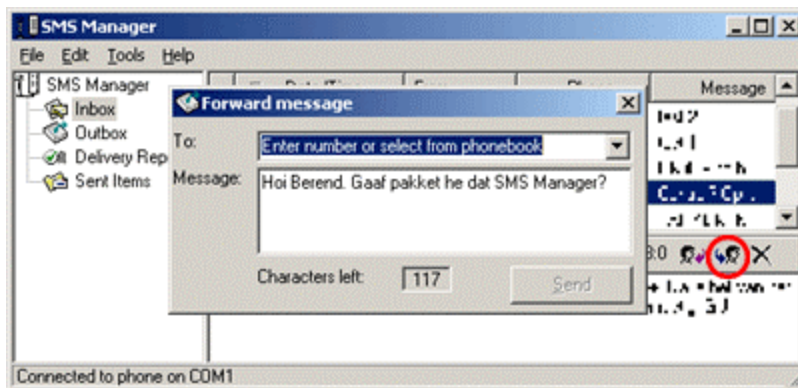
You can also view sent messages by clicking 'Sent Items' in the menu.

5 Replying to messages



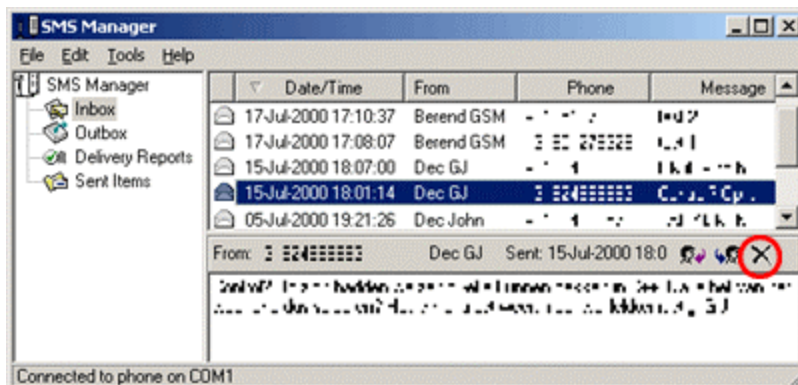
Select a message from the Inbox and click the Reply button to answer it. SMS Manager will automatically fill in the phone number of the original sender in the 'Reply to message' window, you only have to enter the text of your reply.

6 Forwarding messages



Select a message and click the Forward button to forward the same message to a different recipient. SMS Manager will copy the original message text to the 'Forward message' window, you only have to select or type the phone number for the new recipient.

7 Deleting messages



Click the Delete button to delete the selected message. After confirmation the message will be deleted. Note that deletion cannot be undone and the message will also be removed from the memory of your phone.

- You can also delete several messages at once:
- Hold down the [Ctrl] key on your keyboard
 - Click on multiple messages in the list to select them
 - Select 'Delete' from the Edit menu

8 Troubleshooting

8.1 Setup issues

If you have installed SMS Manager, but it doesn't run, please check if you have installed all required software. SMS Manager requires the Visual Basic runtime files. These files are *not* included in the SMS Manager setup download to reduce its size.

See the download section of our website <http://www.softwarecave.com> for a complete list of required software with download links.

8.2 Connection problems

The most common causes of connection problems are:

1. Your phone is not supported.

SMS Manager supports only Nokia models 51xx, 61xx, 81xx and 3210. Nokia 7110 (WAP model) and TDMA models are unfortunately *not* supported.

2. The COM port is not configured correctly.

SMS Manager by default tries to connect via the first serial port (COM1). If you connect your cable to a different port, you have to indicate this in the Connection Parameters window.

3. Your FBUS cable does not work properly.

Unfortunately not all FBUS cables sold are reliable. This problem occurs the most frequently with Nokia 3210, as this phone model was not designed to have a cable connection. To find out if this is the problem you are having, test if other software is working, e.g., Logo Manager (<http://www.logomanager.co.uk>). Please let us know if the problem persists.

8.3 Phone memory

1. SMS messages are never there in the Inbox of my phone, where did they go?

SMS Manager may be set so that read messages are automatically downloaded, then removed from your phone memory. This has the advantage that you can receive more messages without the memory filling up (see below), but you may not be able to view the messages on your phone anymore.

If you (also) want to be able to view messages on your phone, switch off 'remove retrieved messages' and/or 'mark as read' options in the Connection Parameters window.

2. My phone regularly claims that its message memory is full. What can I do?

This is the opposite problem from the one described above. If you have this problem, switch on both 'remove retrieved messages' and 'mark as read' in the Connection Parameters window. If the problem still occurs when you receive many SMS messages in a short period of time, use the option 'Remove All from Phone' in the Edit menu. This makes SMS Manager download all remaining messages and clean the phone's message memory.

8.4 Read/unread state

1. When is a message shown as 'read' in SMS Manager?

This depends on the 'Mark previewed messages as read' setting in the [Connection Parameters](#) window. If this setting is *enabled*, any message that you view longer than 15 seconds in the Inbox of SMS Manager is marked as read. If it is *disabled*, all messages will be shown as unread unless you manually mark them as read (see below) or view them on the display of the phone.

2. How can I mark message(s) as read/unread?

To mark messages as read, select one or more messages in the Inbox (hold down the [Ctrl]-key on your keyboard to select a group of messages), then choose 'Mark as Read' from the Edit menu. Similarly you can mark messages as unread by selecting the menu option 'Mark as Unread'.